

## CONTENT

### PORTFOLIOS

#### **PETER BIALOBRZESKI** 8

He loves long exposures. His documentary studies of urban spaces carry his unmistakable signature. LFI equipped this photographer with a Leica S2 and brand-new 35 mm Summarit-S lens and sent him into the snow-covered, neon-lit Hafen City district of Hamburg.

#### **PIERRE CRIÉ** 48

He cut his ties with the fashion world and started to travel. In Asia, Pierre Crié was exposed to new ways of living. He set off on a pilgrimage through the Tibetan Highlands, equipped with several Leicas and an open mind.

### TECH TALK

#### **NEW: SUMMARIT-S 35 MM F/2.5 ASPH** 20

The Leica S system now includes an extremely powerful, high speed wide angle lens. We explore the technical details of this third member to the S lens family.

#### **THE NOCTILUX SAGA** 24

The new Noctilux 50 mm f/0.95 Asph highlights Leica's ambition to drive speed and quality sky high. We look back at the development of this genuine monstrosity of light.

#### **DIGITAL PHOTOGRAPHY'S NEW RULES OF PLAY** 38

Do digital cameras really have a smaller dynamic range than silver halide film? Or are we simply looking to reform the established rules of exposure? We explore this and other questions on the differences and commonalities of analogue and digital image generation.

### SECTIONS

#### **EDITORIAL** 4

#### **BOOKS** 6

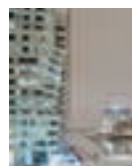
#### **EXHIBITIONS** 62

#### **LFI READERS' GALLERY** 64

#### **PREVIEW / IMPRINT** 66



Peter Bialobrzkeski, Summarit-S 35 mm f/2.5 Asph (page 8)  
The Noctilux-M 50 mm f/0.95 Asph (page 24)  
Pierre Crié: Tibetan pilgrimage (page 48)



Peter Bialobrzkeski:  
Hafen City Hamburg, 2010